



## SUBJECT: Release of PROADAS 22.0 database software update

The new software version 22.0 for iONE CRUISER diagnosis device and for PROADAS 2.0 software is available for download.

To download the update, it is necessary to have an internet connection and follow the instructions provided by the software.



### Main new ADAS/Diagnosis features



#### AUDI A3

- FRONT CAMERA



#### AUDI TT

- FRONT CAMERA



#### BMW iX1

- FRONT CAMERA
- FRONT RADAR



#### LANCIA YPSILON

- FRONT CAMERA



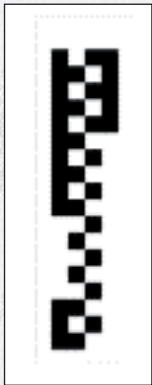
#### FIAT PANDA

- FRONT CAMERA

More than 200 new ADAS equipment positioning procedures available from the following brands\*: AUDI, BMW, CUPRA, FIAT, FORD, HONDA, HYUNDAI, IVECO, KIA, LAMBORGHINI, LANCIA, LAND ROVER, MAN, MAXUS, MITSUBISHI, NISSAN, SEAT, PEUGOUT, TOYOTA, VOLVO, VW

- FRONT CAMERA
- FRONT RADAR
- BLIND SPOT
- REAR CAMERA
- 360° CAMERA

## New ADAS equipment features



- Code **8-61200184** (not replicable with Digital) - IVECO FRONT CAMERA CALIBRATION PANEL

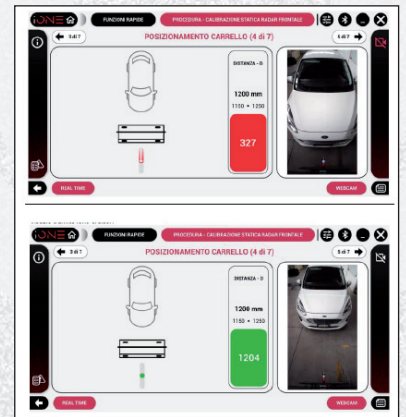
**Target panel extension kit** required for **PROADAS DIGITAL** version  
code 8-62100141

- code **8-62100182** - PROADAS DIGITAL webcam kit

With this kit, it will be possible to position the PROADAS system more **simply and quickly** in frontal radar and camera calibration procedures that require distances adjacent to the vehicle.

The function is **patented**.

Standard kit supplied for all PROADAS systems produced as of 03/03.



The new **PROADAS 22.0** data coverage can be consulted via the new **PROADAS COVERAGE** application on PROADAS website or by pressing the specific button in the PROADAS software.

**PROADAS COVERAGE LINK**



All positioning procedures marked with an asterisk\* require the use of **iONE REMOTE** device in order **to perform the sensor calibration**.